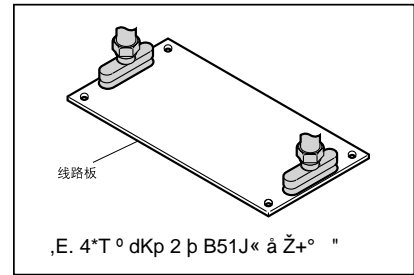
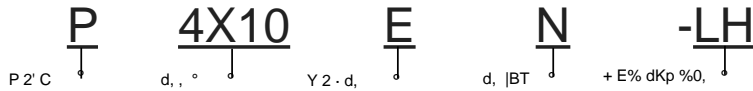


K/d, Vacuum Pad

K/d, - Y2 PE

d, E5

.U



d, , ° •yU•NN

--	4X10	4X20	4X30	6X10	6X20	6X30	8X20	8X30
, °	Ø4X10	Ø4X20	Ø4X30	Ø6X10	Ø6X20	Ø6X30	Ø8X20	Ø8X30

d, |BT

--	BT	- Ö 4 I P S F "	«*T#U Ò8/	MÉ7ž	•/ *aKg(³	E.*T d, , °	-) + E% dKp %0, U• • B 0)2UCE
N	-6t •6"	A55/S	-20~120	Sý7ž	-	Ø4X10~Ø8X30	°
S	-q •6"	A55/S	-50~220	+©7ž	-	Ø4X10~Ø8X30	
SE	(*a-q •6"	A55/S	-30~180	Sý7ž3!%á	10 [±] -10 [±] .cm	Ø4X10~Ø8X30	
FS	!K-q •6"	A55/S	-30~180	3!7ž	-	Ø4X10~Ø8X30	
NE	(*a -6t •6"	A65/S	0~120	Sý7ž: %á	10 [±] -10 [±] .cm	Ø4X10~Ø8X30	
F	!K •6"	A70/S	-10~230	%œ7ž	-	Ø4X10~Ø8X30	
FE	(*a!K •6"	A70/S	0~200	Sý7ž+©%á	10 [±] -10 [±] .cm	Ø4X10~Ø8X30	

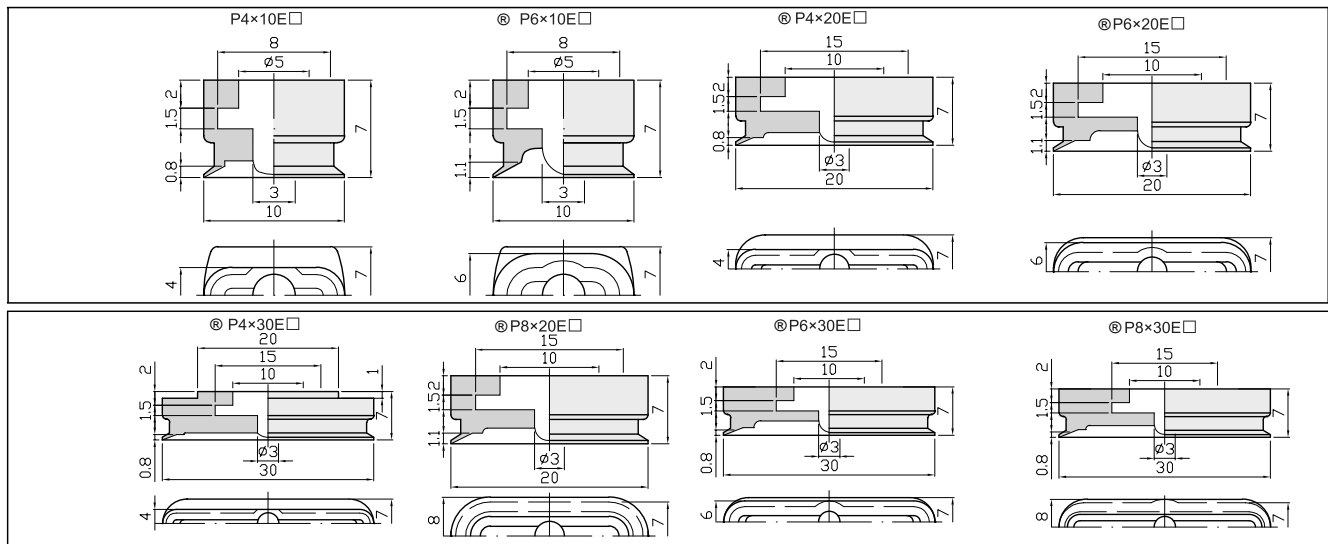
" U• d, |BT S6)A# i5/ yKp0X 6 M;Už ě |BT ô- Ò s Æ tU•A ñ NDú ÔA X \$Už=" Y : 7ž f • ="f•qJ, Ó iU•BS K- U• S #! P

° U="f E5Už - U="f

• B 0)2 :U• | Ä- Ò F ü s A5/SUž@Ü # f="LŽSð%áU• @U• • B 0)2 :+° -6t •6"U•- Ò f A60/SU•@Ü # fSy7žSð%á

B Ž f \$ *

" U• % f•qJ, >ð hU• ě , qB8



1=ñ á ;	DBS K
1pcs/ =-	f•qJ, Ó iU• ě , qB8U• BS K, 7X f V



@İBS8/

P4x10EN
P4x10EN-LH

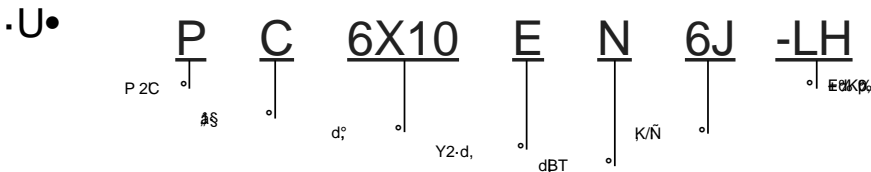
" U• D="f.d, , , °U• mmUCE A ñ NDú7 *a X \$ ÔA

©L, + E% dKp %0, U•A# È | LH :4,

Vacuum Pad

K/d, - Y2- PE 30

d3E5-



K/N		E.TB	c:	
N	4J	Ø4 D01		
	6J	Ø6 D01		
07-N	4B	Ø4 D01		
	6B	Ø6 D01		

	PA		PB		PC	PD	PF
	K/D	Ø/D	SMEK/D	SQ/D	S, N		

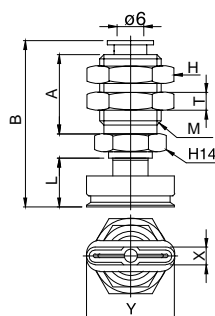
d _o	ØNN	4X10	4X20	4X30	6X10	6X20	6X30	8X20	8X30
;		Ø4X10	Ø4X20	Ø4X30	Ø6X10	Ø6X20	Ø6X30	Ø8X20	Ø8X30

dBT	BT	ØPSF"	W	MĚZ	Ag ³	E.Td, °	UB0)2UCE
N	-66"	A55/S	-20~120	S7ž	-	Ø4X10~Ø8X30	°
S	-9"	A55/S	-50~220	ž	-	Ø4X10~Ø8X30	
SE	(ž)"	A55/S	-30~180	S7ž	10 ⁵ -10 ⁸ .cm	Ø4X10~Ø8X30	
FS	K-9"	A55/S	-30~180	ž	-	Ø4X10~Ø8X30	
NE	(ž)"	A65/S	0~120	S7ž	10 ⁵ -10 ⁸ .cm	Ø4X10~Ø8X30	
F	K6"	A70/S	-10~230	ž	-	Ø4X10~Ø8X30	
FE	(ž)"	A70/S	0~200	S7ž	10 ⁵ -10 ⁸ .cm	Ø4X10~Ø8X30	

UeBT56)A8/K0X 6 MUBT6EPA ND0XS 7:7 q0BSK-U6P
 ° U#E5Už -U#
 B0)2:U#A A5/SUB0)2:6U-0 A60/SUB0)2:6U-0

PA K/D/DEKŇ

	#		d. BT	K/N	Øe							
	X	Y			gP/B	M	H	T	A	L		
PA & AE ; Mc F K / I O	4	10	E	N	6J	39.5	M14X1	17	4	20	11	
		20				39.5	M14X1	17	4	20	11	
		30				39.5	M14X1	17	4	20	11	
		6				10	39.5	M14X1	17	4	20	11
						20	39.5	M14X1	17	4	20	11
						30	39.5	M14X1	17	4	20	11
	8	20				39.5	M14X1	17	4	20	11	
		30				39.5	M14X1	17	4	20	11	
		30				39.5	M14X1	17	4	20	11	



BT) /44# q0BSK-U6P
 BT:BAAXS
 #K/N#
 žžX M#03#
 80)A#T#U#19#



PA8X30EN6J
 PA8X30EN6J-LH
 LH:4,

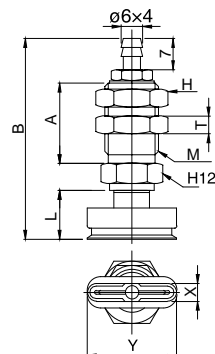
,K/i d, Vacuum Pad



PA 8X20EN6

WJNN

-	#			d, BT	K/i N	D _B						
	X	Y	1S			gP B	M	H	T	A	L	
PA & E ; Mc F K /i 0	4	10	E	Y 2 · d	N S SE FS NE F FE	6B	45	M12X1	14	4	18	11
		20					45	M12X1	14	4	18	11
		30					45	M12X1	14	4	18	11
	6	10					45	M12X1	14	4	18	11
		20					45	M12X1	14	4	18	11
		30					45	M12X1	14	4	18	11
	8	20					45	M12X1	14	4	18	11
		30					45	M12X1	14	4	18	11
		30					45	M12X1	14	4	18	11



BT) /44%
BT: 8AAAXS
809A8TBU19&



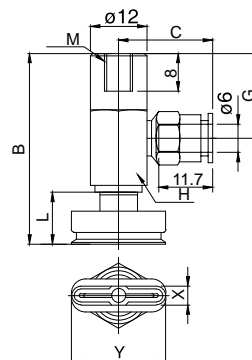
PA8X20EN6
PA8X20EN6B-LH
LH:4,

Y
2
.

PB 4X20EN6

WJ

-	#			d, BT	K/i N	D _B						
	X	Y	1S			gP B	M	H	C	G	L	
PB & E ; O LZ K /i 0	4	10	E	Y 2 · d	N S SE FS NE F FE	6J	39	M6X1	12	20	18	11
		20					39	M6X1	12	20	18	11
		30					39	M6X1	12	20	18	11
	6	10					39	M6X1	12	20	18	11
		20					39	M6X1	12	20	18	11
		30					39	M6X1	12	20	18	11
	8	20					39	M6X1	12	20	18	11
		30					39	M6X1	12	20	18	11
		30					39	M6X1	12	20	18	11



BT) /44%
BT: 8AAAXS
809A8TBU19&

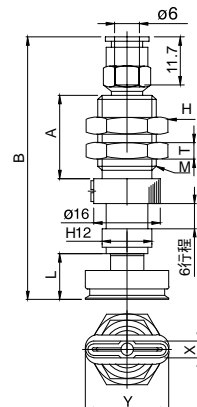


PB4X20EN6J
PB4X20EN6J-LH
LH:4,

PC 6SMFK/D

WJ

-	#			d, BT	K/i N	D _B						
	X	Y	1S			gP B	M	H	T	A	L	
PC e 1S ; Mc F K /i 0	4	10	E	Y 2 · d	N S SE FS NE F FE	6J	63	M14X1	17	4	20	11
		20					63	M14X1	17	4	20	11
		30					63	M14X1	17	4	20	11
	6	10					63	M14X1	17	4	20	11
		20					63	M14X1	17	4	20	11
		30					63	M14X1	17	4	20	11
	8	20					63	M14X1	17	4	20	11
		30					63	M14X1	17	4	20	11
		30					63	M14X1	17	4	20	11



BT) /44%
BT: 8AAAXS
809A8TBU19&



19&
19&
LH:4,

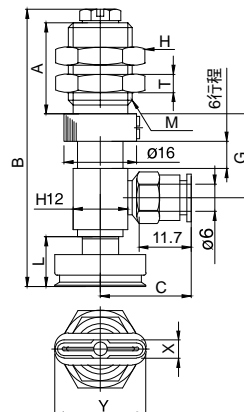
Vacuum Pad

K/d, - Y2, PE 30

PD 8X30

-	#			1S	d, BT	K/N	D										
	X	Y					gP/B	M	H	T	A	C	G	L	z/7		
PD e 1S : Mc F K /i 0	4	10	E	Y 2 · d ,	N S SE FS NE F FE	6J	61	M14X1	17	4	20	20	18.5	11	6		
							61	M14X1	17	4	20	20	18.5	11	6		
							61	M14X1	17	4	20	20	18.5	11	6		
		6					20	6B	61	M14X1	17	4	20	20	18.5	11	6
									61	M14X1	17	4	20	20	18.5	11	6
									61	M14X1	17	4	20	20	18.5	11	6
	8	30			61	M14X1	17	4	20	20	18.5	11	6				
					61	M14X1	17	4	20	20	18.5	11	6				
					61	M14X1	17	4	20	20	18.5	11	6				

BT) /44% QBSK-US BT: 6
AAAXS
#8X/100+
#8X M03#
809A#TU0192



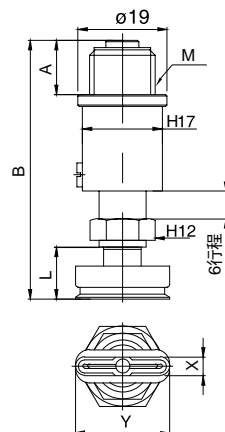
PD8X30EN6J
PD8X30EN6J-LH
LH:4,

Y
2

PF 8X30

-	#			1S	d, BT	gP/B	M	H	A	L	z/7		
	X	Y											
PF e 1S : N μ ā ·	4	10	E	Y 2 · d ,	N S SE FS NE F FE	55	M14X1	17	20	11	6		
						55	M14X1	17	20	11	6		
						55	M14X1	17	20	11	6		
		6				20		55	M14X1	17	20	11	6
								55	M14X1	17	20	11	6
								55	M14X1	17	20	11	6
	8	30			55	M14X1	17	20	11	6			
					55	M14X1	17	20	11	6			
					55	M14X1	17	20	11	6			

BT) /44% QBSK-US BT: 6
AAAXS
#8X/100+
#8X M03#
809A#TU0192



PF8X30EN
PF8X30EN-LH
LH:4,